

Product:

**PSMA** | ADMINISTRATIVE  
BOUNDARIES

Prepared:

November 2017  
Version 1.0

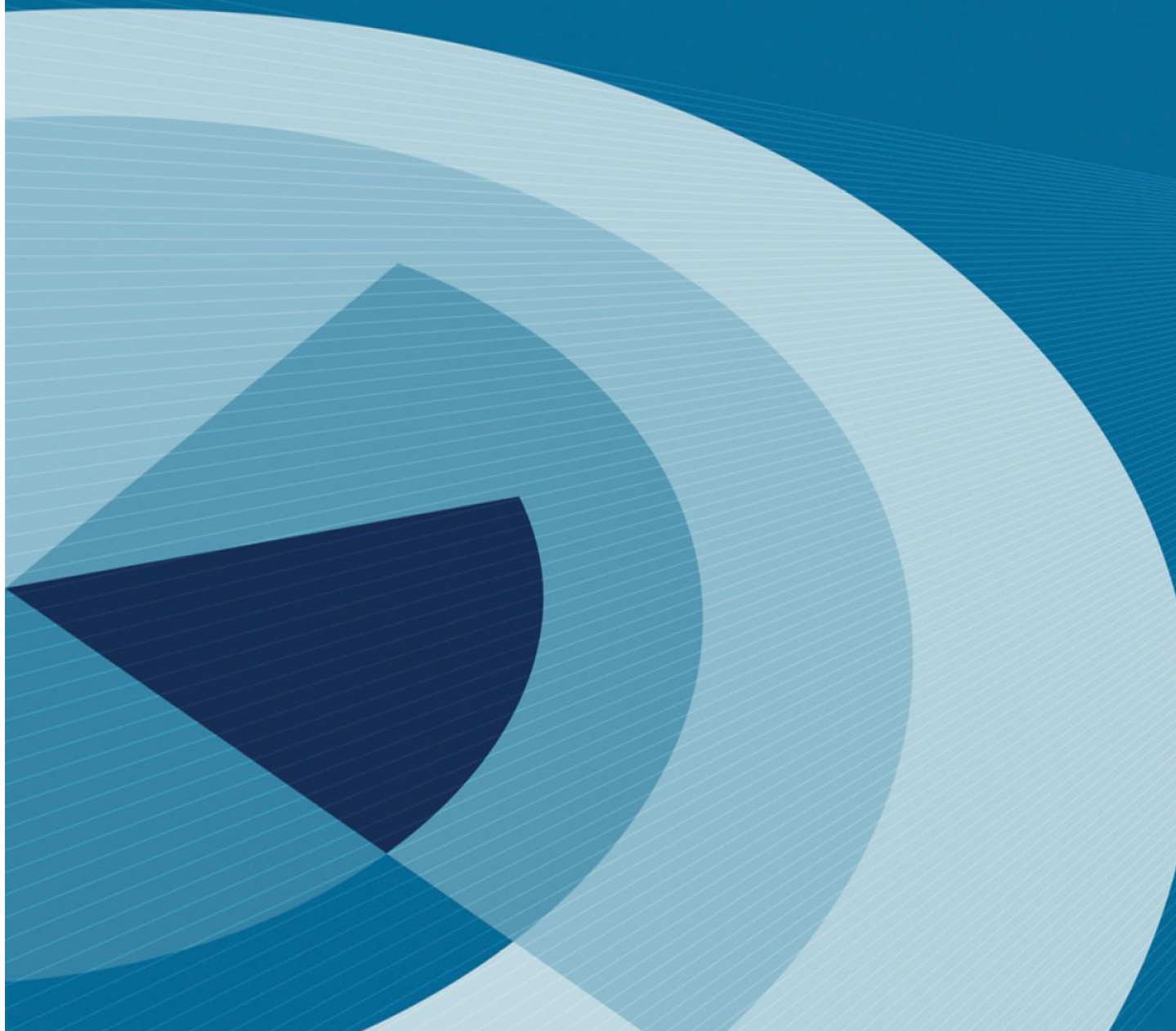


**PSMA**  
AUSTRALIA

# Administrative Boundaries

## Data Release Report

November 2017



## Revision History

Date	Version	Change	Coordinator
November 2017	1.0	Initial Version	Anthony Hesling

## Disclaimer

PSMA Australia believes this publication to be correct at the time of printing and does not accept responsibility for any consequences arising from the use of information herein. Readers should rely on their own skill and judgement to apply information to particular issues.

This work is copyright. Apart from any use as permitted under the Copyright Act 1968, no part may be reproduced by any process without prior written permission of PSMA Australia Limited.

# Contents

<b>Introduction.....</b>	<b>1</b>
Document Purpose.....	1
Audience.....	1
Support.....	1
<b>Overview.....</b>	<b>2</b>
<b>Updates and Issues.....</b>	<b>3</b>
Updates .....	3
Issues .....	8
<b>Future Considerations .....</b>	<b>9</b>
<b>Appendix A.....</b>	<b>10</b>
<b>Summary Statistics .....</b>	<b>15</b>
Suburbs/Localities .....	15
Wards .....	17

# Introduction

PSMA's Administrative Boundaries dataset is Australia's most comprehensive national collection of boundaries including government, statistical and electoral boundaries. The dataset contains boundaries in six themes: Australian Bureau of Statistics (ABS) boundaries, electoral boundaries, state and territory boundaries, local government areas, suburbs/localities, and town points. Some of the themes, such as the ABS, include further layers of data to support a wide range of analysis and segmentation activities. For more information, please refer to the Administrative Boundaries Product Description.

## Document Purpose

This document provides a description of the issues, changes, features, updates and overarching statistics relating to the applicable data release. This document should be read in conjunction with the relevant Product Description.

## Audience

This document is made available to PSMA staff, data contributors, direct clients and end users. It intended to be used by business managers, data managers and analysts as a guide and reference to understanding the content and variations within a data release.

## Support

### **PSMA Australia Support**

PSMA Australia Limited

[www.psmas.com.au/contact](http://www.psmas.com.au/contact)

# Overview

- The November 2017 data release of Administrative Boundaries contains updates to Suburbs/Localities, Local Government Areas, Wards and Mesh Blocks.
- New Localities have been added for ACT (2), QLD (1) and SA (1).
- New Wards have been added for NT (3)
  - NT also retired 7 wards
- Detailed listings and Significant Area Changes can be found in the Updates and Issues section of this report.
- The Mesh Blocks data model has been edited to account for large Dwelling counts.
- Summary Statistics for each theme can be found at the end of this report.

# Updates and Issues

## Updates

### Localities

- New Localities are listed below:

Localities		
Insertions	Name	Size (km <sup>2</sup> )
ACT935	STRATHNAIRN	4.2
ACT936	MACNAMARA	4.2
QLD3396	BARINGA	2.8
SA210006284	PARSONS BEACH	7.3

- Spatial (area) changes greater than 1 km<sup>2</sup> for Locality boundaries are shown below:

State	LC_PLY_PID	Name	Variation km <sup>2</sup> (approx)	Description
NSW	27973	WALLAROO	-27.3	Decreased In size due to realigning of the boundary with SPRINGRANGE
NSW	28018	ULAN	-18.8	Decreased in size due to realigning of the boundary with COPE
NSW	27969	GUNDAROO	-4.3	Decreased in size due to realigning of the boundary with NANIMA and SUTTON
NSW	27970	NANIMA	-3.3	Decreased in size due to realigning of the boundary with SPRINGRANGE, GUNDAROO, YASS RIVER & MURRUMBATEMAN
NSW	27967	YASS RIVER	-3.3	Decreased in size due to realigning of the boundary with NANIMA & MURRUMBATEMAN
NSW	28029	COOMEALLA	-2.6	Decreased in size due to realigning of the boundary with CURLWAA
NSW	28202	THE LAGOON	-1.1	Decreased in size due to realigning of boundary with O'CONNELL
NSW	28039	BINALONG	-1.1	Decreased in size due to realigning of boundary with BOWNING
NSW	28201	O'CONNELL	1.1	Increased in size due to realigning of boundary with THE LAGOON
NSW	27963	BOWNING	1.1	Increased in size due to realigning of boundaries with BINALONG
NSW	27865	CURLWAA	2.6	Increased in size due to realigning of boundary with COOMEALLA
NSW	27966	SUTTON	7.3	Increased in size due to realigning of the boundary with GUNDAROO

State	LC_PLY_PID	Name	Variation km <sup>2</sup> (approx)	Description
NSW	27968	MURRUMBATEMAN	7.5	Increased in size due to realigning of the boundary with NANIMA & YASS RIVER
NSW	28017	COPE	18.8	Increased in size due to realigning of the boundary with ULAN
NSW	27972	SPRINGRANGE	23.3	Increased in size due to realigning of the boundary with WALLAROO & NANIMA
QLD	65261	BELYANDO	-14.2	Decreased in size due to realigning of the boundary with PENTLAND & LAGLAN
QLD	65788	KINKUNA	-11.1	Decreased with size due to realigning of the boundary with GOODWOOD
QLD	66055	YARROL	-8.3	Decreased in size due to realigning of the boundary with VENTNOR
QLD	65253	BEDOURIE	-6.4	Decreased in size due to realigning of the boundary with BIRDSVILLE
QLD	65995	TANBAR	-5.7	Decreased in size due to realigning of the boundary with DURHAM
QLD	65371	CLONCURRY	-3.9	Decreased in size due to realigning of the boundary with KURIDALA
QLD	66038	RAVENSWOOD	-2.8	Decreased in size due to realigning of the boundary with SEVENTY MILE
QLD	65277	BELLS CREEK	-2.8	Decreased in size due to realigning of the boundary with the new locality of BARINGA
QLD	65940	LAGLAN	-2.3	Decreased in size due to realigning of boundary with PENTLAND and BELYANDO
QLD	65598	HOME CREEK	-2.0	Decreased in size due to realigning of the boundary with EVORA
QLD	66111	PATRICK	-1.9	Decreased in size due to realigning of the boundary with NARBETHONG
QLD	65421	GOODAR	-1.8	Decreased in size due to realigning of the boundary with TOOBEAH
QLD	65184	ABBOTSFORD	-1.3	Decreased in size due to realigning of the boundary of MONDURAN
QLD	65640	MEXICO	-1.2	Decreased in size due to realigning of the boundaries with the localities of HOBARTVILLE, JERICHO & GARFIELD
QLD	65482	HOBARTVILLE	-1.0	Decreased in size due to realigning of boundaries with the localities of MEXICO, GARFIELD, DUNROBIN, JERICHO & DRUMMONDSLOPE
QLD	66208	WIGTON	-1.0	Decreased in size due to realigning of the boundary with OLD COORANGA, TOONDAHRA, BOONDOOMA,

State	LC_PLY_PID	Name	Variation km <sup>2</sup> (approx)	Description
				STONELANDS, WAHOON, ARANBANGA & PINE GULLY
QLD	65659	MONDURAN	1.3	Increased in size due to realigning of the boundary with ABBOTSFORD
QLD	66134	TOOBEAH	1.8	Increased in size due to realigning of the boundary with GOODAR
QLD	65690	NARBETHONG	1.9	Increased in size due to realigning of the boundary with PATRICK
QLD	65572	EVORA	2.0	Increased in size due to realigning of the boundary with HOME CREEK
QLD	66110	SEVENTY MILE	2.8	Increased in size due to realigning of the boundary with RAVENSWOOD
QLD	65570	GARFIELD	2.8	Increased in size due to realigning of the boundary with MEXICO, HOBARTVILLE & DUNROBIN
QLD	65894	KURIDALA	3.9	Increased in size due to realigning of the boundary with CLONCURRENCY
QLD	65578	DURHAM	5.7	Increased in size due to realigning of the boundary with TANBAR
QLD	65270	BIRDSVILLE	6.4	Increased in size due to realigning of the boundary with BEDOURIE
QLD	66099	VENTNOR	8.3	Increased in size due to realigning of the boundary with YARROL
QLD	65445	GOODWOOD	11.1	Increased in size due to realigning of the boundary with KINKUNA
QLD	65664	PENTLAND	15.9	Increased in size due to realigning of the boundary with LAGLAN & BELYANDO
SA	21814	PUREBA	-52.9	Decreased in size due to realigning of the boundary with MUDAMUCKLA
SA	21828	MINBURRA STATION	-9.2	Decreased in size due to realigning of the boundary with KOONAMORE & MELTON STATION
SA	21808	MINLATON	-7.3	Decreased in size due to realigning of the boundary with the new locality of PARSONS BEACH
SA	21797	MELTON STATION	1.1	Increased in size due to realigning of the boundary with MINBURRA STATION, KOONAMORE, MOUNT VICTOR STATION, WINNININNIE & WAUKARINGA
SA	21832	WINNININNIE	2.3	Increased in size due to realigning of the boundary with MELTON STATION & MOUNT VICTOR STATION
SA	21800	KOONAMORE	5.1	Increased in size due to realigning of the boundary with MINBURRA STATION, MELTON STATION & MOUNT VICTOR STATION



State	LC_PLY_PID	Name	Variation km <sup>2</sup> (approx)	Description
SA	21806	MUDAMUCKLA	52.9	Increased in size due to realigning of the boundary with PUREBA
TAS	5016	DOCTORS ROCKS	-1.8	Decreased in size due to realigning of the boundary with WYNYARD
TAS	5012	ROCHERLEA	-1.8	Decreased in size due to realigning of the boundary with NUNAMARA
TAS	5011	PRIMROSE SANDS	-1.3	Decreased in size due to realigning of the boundary with CARLTON RIVER
TAS	5035	CARLTON RIVER	1.3	Increased in size due to realigning of the boundary with PRIMROSE SANDS
TAS	5032	WYNYARD	1.8	Increased in size due to realigning of the boundary with DOCTORS ROCKS
TAS	4974	NUNAMARA	1.9	Increased in size due to realigning of the boundary with ROCHERLEA
WA	16838	PERILLUP	-46.4	Decreased in size due to realigning of the boundary with KENDENUP & FOREST HILL
WA	16775	KENDENUP	7.2	Increased in size due to realigning of the boundary with FOREST HILL & PERILLUP
WA	16764	FOREST HILL	39.2	Increased in size due to realigning of the boundary with PERILLUP & KENDENUP

## Local Government Areas (LGAs)

- New and Retired LGAs are listed below:

Local Government Areas		
Insertions	Name	Size (km <sup>2</sup> )
NT95	NORTHERN TERRITORY RATES ACT AREA	52.2
WA427	CITY OF KALAMUNDA	323.9
Deletions	Name	Size (km <sup>2</sup> )
NT78	DARWIN RATES ACT AREA	-52.2
WA363	SHIRE OF KALAMUNDA	-323.9

- Other Spatial (area) changes greater than 1 km<sup>2</sup> for LGA boundaries are shown below:

State	LG_PLY_PID	Name	Variation km <sup>2</sup> (approx)	Description
QLD	3525	ISAAC	-16.3	Decreased in size due to realigning of the boundary with CHARTERS TOWERS
QLD	3506	BARCOO	-5.7	Decreased in size due to realignment of the boundary with BULLOO
QLD	3497	SOUTH BURNETT	-1.4	Increased in size due to realignment of the boundary with GYMPIE
QLD	3522	GYMPIE	1.8	Increased in size due to realignment of the boundary with SOUTH BURNETT
QLD	3508	BULLOO	5.7	Increased in size due to realigning of the boundary with BARCOO
QLD	3514	CHARTERS TOWERS	15.8	Increased in size due to realigning of the boundary with ISAAC

## Wards

- New and retired Wards are listed below:

Localities		
Insertions	Name	Size (km <sup>2</sup> )
NT60	COOMALIE RURAL WARD	1252.7
NT61	ADELAIDE RIVER WARD	792.9
NT62	BATHURST ISLAND WARD	1674.4
Deletions	Name	Size (km <sup>2</sup> )
NT40	NGUIU WARD	-714.8
NT48	WURANKUWU WARD	-959.6
NT55	BATCHELOR RURAL WARD	-124.6
NT56	ADELAIDE RIVER TOWNSHIP WARD	-8.5
NT57	ADELAIDE RIVER RURAL WARD	-784.3
NT58	COOMALIE TORTILLA WARD	-963.6
NT59	LAKE BENNETT WARD	-164.5

## State Electoral Boundaries

- New polygon records exist in the NT State Electoral Boundaries layer due to the “exploding” of multi-part features.
- QLD State Electoral Boundaries have been updated to include the 2017 Redistribution.

## Mesh Blocks 2016

- As advised in the previous Release Report (May 2017), the Population and Dwelling Counts have now been included in this Release.

## Issues

### Mesh Blocks 2016

#### *MB\_2016\_DWELLING\_COUNT field*

A restriction in the current Mesh Block data model has resulted in four records in the Dwelling Count attribute not being updated in the data. The dwelling count for these records therefore remains at ‘0’ for the August 2017 Release.

**Users should note that the Mesh Block data model will be amended for the November 2017 release.**

The four affected records should have the following dwelling count attribution:

Table	MB_16PID	MB_2016_DWELLING_COUNT
NSW_MB_2016.DBF	MB1611205792100	<b>1026</b>
NSW_MB_2016.DBF	MB1610603480000	<b>1558</b>
VIC_MB_2016.DBF	MB1620401423000	<b>1070</b>
VIC_MB_2016.DBF	MB1620664901000	<b>1923</b>

#### *AREA\_SQM field in MapInfo Extracts*

- For ABS data (Mesh Blocks and Statistical Areas), there was an issue with the MapInfo extract data for the field AREA\_SQM as reported in the previous release. PSMA has therefore rectified this issue for the November 2017 release as follows:

**The AREASQKM field has changed from NUMBER(38,15) to NUMBER(20,7).**

# Future Considerations

## **ABS 2016 Theme**

A new layer called “2016 Urban Centre and Locality - Section of State - Significant Urban Area” will be introduced for FEBRUARY 2018 release to the Admin Boundaries product under the “ABS Boundaries 2016” Theme. The data consists of the ABS 2016 Urban Centre Localities (UCL), Section of State (SOS), Section of State Range (SOSR) and Significant Urban Areas (SUA) into one layer.

The data dictionary and data model for the new data is shown in Appendix A.

# Appendix A

## UCL\_2016

Name	Data Type	Description	Prim Key	Man	F K TABLE	F K Col	10 Char Alias
UCL_2016_PID	varchar2(15)	The Persistent Identifier is unique to the real world feature this record represents.	Y	Y	-	-	UCL_16PID
DATE_CREATED	date	Date this record was created.	N	Y	-	-	DT_CREATE
DATE_RETIRED	date	Date this record was retired.	N	N	-	-	DT_RETIRE
UCL_2016_CODE	number(6)	The Urban Centre and Locality code	N	Y	-	-	UCL_16CODE
UCL_2016_NAME	varchar2(50)	The Urban Centre and Locality name.	N	Y	-	-	UCL_16NAME
SSR_2016_CODE	number(3)	The Section of State Range code.	N	Y	-	-	SSR_16CODE
SSR_2016_NAME	varchar2(50)	The Section of State Range name.	N	Y	-	-	SSR_16NAME
SOS_2016_CODE	number(2)	The Section of State code.	N	Y	-	-	SOS_16CODE
SOS_2016_NAME	varchar2(50)	The Section of State name.	N	Y	-	-	SOS_16NAME
AREA_SQKMS	number(10,3)	The area in square kilometres calculated by the ABS using the Albers projection.	N	N	-	-	AREA_SQKMS
STATE_PID	varchar2(15)	State Persistent Identifier.	N	Y	STATE	STATE_PID	STATE_PID

## UCL\_2016\_POLYGON

Name	Data Type	Description	Prim Key	Man	F K TABLE	F K Col	10 Char Alias
UCL_2016_POLYGON_PID	varchar2(15)	The Persistent Identifier is unique to the real world feature this record represents.	Y	Y	-	-	UCL_16PPID
DATE_CREATED	date	Date this record was created.	N	Y	-	-	DT_CREATE
DATE_RETIRED	date	Date this record was retired.	N	N	-	-	DT_RETIRE
UCL_2016_PID	varchar2(15)	Urban centre/locality Persistent Identifier.	N	Y	UCL_2016	UCL_16PID	UCL_16PID

Name	Data Type	Description	Prim Key	Man	F K TABLE	F K Col	10 Char Alias
GEOMETRY	polygon	Polygon geometry.	N	Y	-	-	GEOMETRY

### SOSR\_2016

Name	Data Type	Description	Prim Key	Man	F K TABLE	F K Col	10 Char Alias
SSR_2016_PID	varchar2(15)	The Persistent Identifier is unique to the real world feature this record represents.	Y	Y	-	-	SSR_16PID
DATE_CREATED	date	Date this record was created.	N	Y	-	-	DT_CREATE
DATE_RETIRED	date	Date this record was retired.	N	N	-	-	DT_RETIRE
SSR_2016_CODE	number(3)	The Section of State Range code.	N	Y	-	-	SSR_16CODE
SSR_2016_NAME	varchar2(50)	The Section of State Range name.	N	Y	-	-	SSR_16NAME
SOS_2016_CODE	number(2)	The Section of State code.	N	Y	-	-	SOS_16CODE
SOS_2016_NAME	varchar2(50)	The Section of State name.	N	Y	-	-	SOS_16NAME
AREA_SQKMS	number(10,3)	The area in square kilometres calculated by the ABS using the Albers projection.	N	N	-	-	AREA_SQKMS
STATE_PID	varchar2(15)	State Persistent Identifier.	N	Y	STATE	STATE_PID	STATE_PID

### SOSR\_2016\_POLYGON

Name	Data Type	Description	Prim Key	Man	F K TABLE	F K Col	10 Char Alias
SSR_2016_POLYGON_PID	varchar2(15)	The Persistent Identifier is unique to the real world feature this record represents.	Y	Y	-	-	SSR_16PPID
DATE_CREATED	date	Date this record was created.	N	Y	-	-	DT_CREATE
DATE_RETIRED	date	Date this record was retired.	N	N	-	-	DT_RETIRE
SSR_2016_PID	varchar2(15)	The Section of State Range Identifier.	N	Y	SOSR_2016	SSR_16PID	SSR_16PID

Name	Data Type	Description	Prim Key	Man	F K TABLE	F K Col	10 Char Alias
GEOMETRY	polygon	Polygon geometry.	N	Y	-	-	GEOMETRY

### SOS\_2016

Name	Data Type	Description	Prim Key	Man	F K TABLE	F K Col	10 Char Alias
SOS_2016_PID	varchar2(15)	The Persistent Identifier is unique to the real world feature this record represents.	Y	Y	-	-	SOS_16PID
DATE_CREATED	date	Date this record was created.	N	Y	-	-	DT_CREATE
DATE_RETIRED	date	Date this record was retired.	N	N	-	-	DT_RETIRE
SOS_2016_CODE	number(2)	The Section of State code.	N	Y	-	-	SOS_16CODE
SOS_2016_NAME	varchar2(50)	The Section of State name.	N	Y	-	-	SOS_16NAME
AREA_SQKMS	number(10,3)	The area in square kilometres calculated by the ABS using the Albers projection.	N	N	-	-	AREA_SQKM
STATE_PID	varchar2(15)	State Persistent Identifier.	N	Y	STATE	STATE_PID	STATE_PID

### SOS\_2016\_POLYGON

Name	Data Type	Description	Prim Key	Man	F K TABLE	F K Col	10 Char Alias
SOS_2016_POLYGON_PID	varchar2(15)	The Persistent Identifier is unique to the real world feature this record represents.	Y	Y	-	-	SOS_16PPID
DATE_CREATED	date	Date this record was created.	N	Y	-	-	DT_CREATE
DATE_RETIRED	date	Date this record was retired.	N	N	-	-	DT_RETIRE
SOS_2016_PID	varchar2(15)	The Section of State Identifier.	N	Y	SOS_2016	SOS_16PID	SOS_16PID
GEOMETRY	Spatial	Polygon geometry.	N	Y	-	-	GEOMETRY

### SUA\_2016

Name	Data Type	Description	Prim Key	Man	F K TABLE	F K Col	10 Char Alias
<b>SUA_2016_PID</b>	varchar2(15)	The Persistent Identifier is unique to the real world feature this record represents.	Y	Y	-	-	SUA_16PID
<b>DATE_CREATED</b>	date	Date this record was created.	N	Y	-	-	DT_CREATE
<b>DATE_RETIRED</b>	date	Date this record was retired.	N	N	-	-	DT_RETIRE
<b>SUA_2016_CODE</b>	number(4)	The Significant Urban Area code.	N	Y	-	-	SUA_16CODE
<b>SUA_2016_NAME</b>	varchar2(50)	The Significant Urban Area name.	N	Y	-	-	SUA_16NAME
<b>AREA_SQKM</b>	number(10,3)	The area in square kilometres calculated by the ABS using the Albers projection.	N	N	-	-	AREA_SQKM

### SUA\_2016\_POLYGON

Name	Data Type	Description	Prim Key	Man	F K TABLE	F K Col	10 Char Alias
<b>SUA_2016_POLYGON_PID</b>	varchar2(15)	The Persistent Identifier is unique to the real world feature this record represents.	Y	Y	-	-	SUA_16PPID
<b>DATE_CREATED</b>	date	Date this record was created.	N	Y	-	-	DT_CREATE
<b>DATE_RETIRED</b>	date	Date this record was retired.	N	N	-	-	DT_RETIRE
<b>SUA_2016_PID</b>	varchar2(15)	Significant Urban Area (SUA) Persistent Identifier.	N	Y	SUA_2016	SUA_16PID	SUA_16PID
<b>GEOMETRY</b>	polygon	Polygon geometry.	N	Y	-	-	GEOMETRY



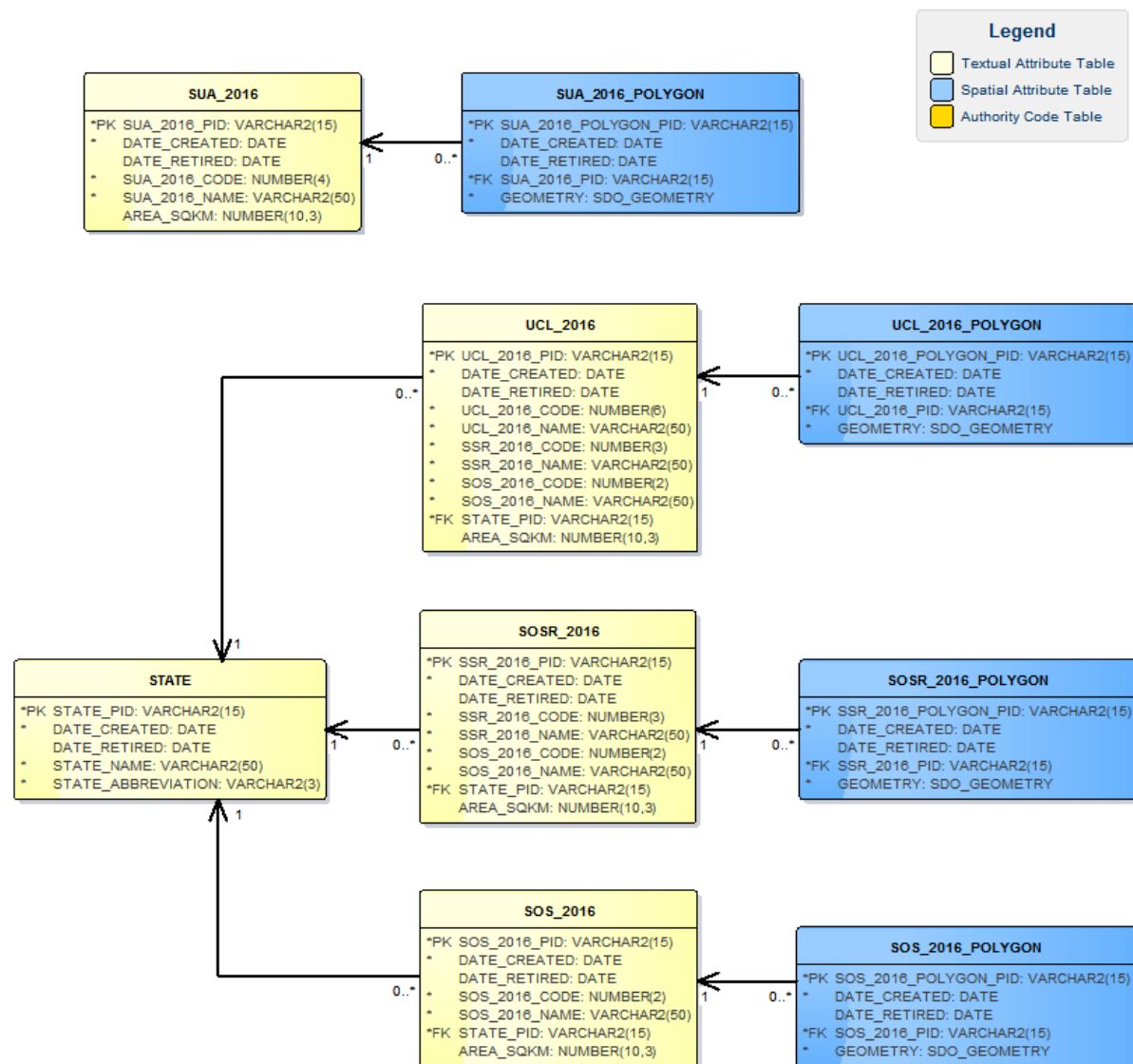


Diagram showing new data model for 2016 UCL, SOS, SOSR and SUA layer

# Summary Statistics

- Counts representing the number of records in each table are listed below, including the change since the previous Release.

## Suburbs/Localities

Jurisdiction	Table	Previous Release	Previous Count	Current Count	Percentage Change
ACT	LOCALITY	Aug-17	136	138	1.47
ACT	LOCALITY_POLYGON	Aug-17	136	138	1.47
NSW	LOCALITY	Aug-17	4552	4552	0.00
NSW	LOCALITY_POLYGON	Aug-17	4572	4572	0.00
NT	LOCALITY	Aug-17	306	306	0.00
NT	LOCALITY_POLYGON	Aug-17	312	312	0.00
OT	LOCALITY	Aug-17	5	5	0.00
OT	LOCALITY_POLYGON	Aug-17	6	6	0.00
QLD	LOCALITY	Aug-17	3274	3275	0.03
QLD	LOCALITY_POLYGON	Aug-17	3327	3328	0.03
SA	LOCALITY	Aug-17	2423	2424	0.04
SA	LOCALITY_POLYGON	Aug-17	2452	2453	0.04
TAS	LOCALITY	Aug-17	775	775	0.00
TAS	LOCALITY_POLYGON	Aug-17	781	781	0.00
VIC	LOCALITY	Aug-17	2973	2973	0.00
VIC	LOCALITY_POLYGON	Aug-17	2973	2973	0.00
WA	LOCALITY	Aug-17	1695	1695	0.00
WA	LOCALITY_POLYGON	Aug-17	1731	1731	0.00

## Local Government Areas

Jurisdiction	Table	Previous Release	Previous Count	Current Count	Percentage Change
NSW	LGA	Aug-17	130	130	0.00
NSW	LGA_LOCALITY	Aug-17	4986	4986	0.00
NSW	LGA_POLYGON	Aug-17	197	197	0.00
NT	LGA	Aug-17	25	25	0.00
NT	LGA_LOCALITY	Aug-17	318	317	-0.31
NT	LGA_POLYGON	Aug-17	812	812	0.00
QLD	LGA	Aug-17	78	78	0.00
QLD	LGA_LOCALITY	Aug-17	3361	3362	0.03
QLD	LGA_POLYGON	Aug-17	209	209	0.00
SA	LGA	Aug-17	73	73	0.00
SA	LGA_LOCALITY	Aug-17	2064	2069	0.24
SA	LGA_POLYGON	Aug-17	171	171	0.00
TAS	LGA	Aug-17	29	29	0.00
TAS	LGA_LOCALITY	Aug-17	886	886	0.00
TAS	LGA_POLYGON	Aug-17	4357	4357	0.00
VIC	LGA	Aug-17	87	87	0.00
VIC	LGA_LOCALITY	Aug-17	3337	3337	0.00
VIC	LGA_POLYGON	Aug-17	92	92	0.00
WA	LGA	Aug-17	137	137	0.00
WA	LGA_LOCALITY	Aug-17	1738	1738	0.00
WA	LGA_POLYGON	Aug-17	165	165	0.00

## Wards

Jurisdiction	Table	Previous Release	Previous Count	Current Count	Percentage Change
NT	WARD	Aug-17	53	49	-7.55
NT	WARD_POLYGON	Aug-17	835	830	-0.60
SA	WARD	Aug-17	148	148	0.00
SA	WARD_POLYGON	Aug-17	154	154	0.00
VIC	WARD	Aug-17	271	271	0.00
VIC	WARD_POLYGON	Aug-17	275	275	0.00
WA	WARD	Aug-17	209	209	0.00
WA	WARD_POLYGON	Aug-17	238	238	0.00